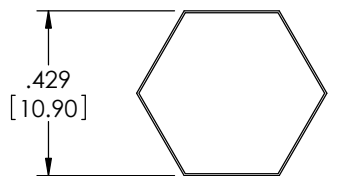
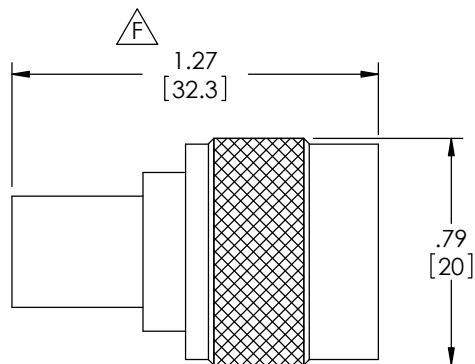
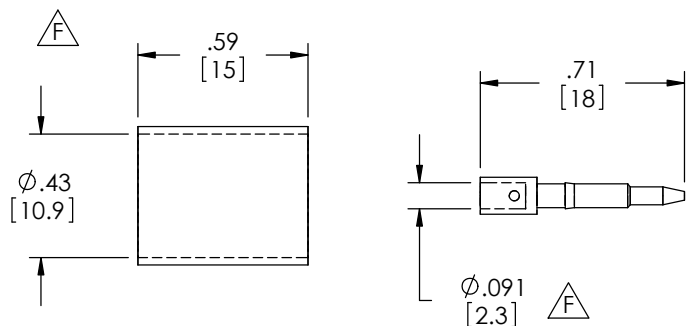
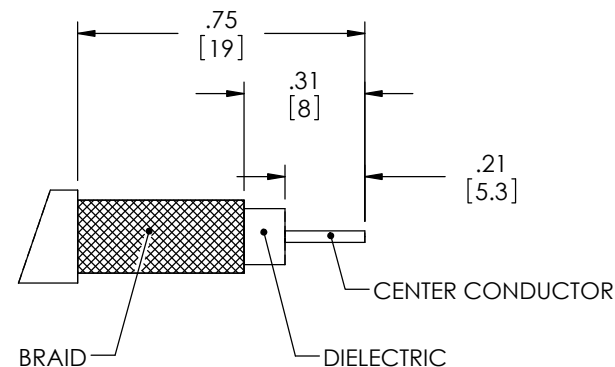
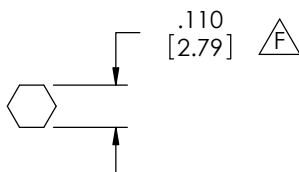


THE INFORMATION CONTAINED IN THIS DRAWING IS THE SOLE PROPERTY OF L-COM, INC. ANY REPRODUCTION IN PART OR WHOLE WITHOUT THE WRITTEN PERMISSION OF L-COM, INC. IS PROHIBITED.

REVISIONS			
REV	DESCRIPTION	DATE	APPROVED
E	ECN 4315: UPDATE DRAWING PER NEW SUPPLIER SPECS	10/13/09	D. CASTRO
F	ECN 7376: REVISED CBL STRIP DIMS AND DIMS PER NEW VENDOR SPEC	4/14/14	D.FRISIELLO



RECOMMENDED  
FERRULE & PIN  
CRIMP SIZE



RECOMMENDED  
CABLE STRIPPING  
DIMENSIONS

#### NOTES:

**MATERIAL:**  
BODY: BRASS  
FERRULE: BRASS  
PIN: BRASS  
INSULATOR: PTFE


**FINISH:**  
BODY: NICKEL PLATE  
FERRULE: NICKEL PLATE  
PIN: GOLD PLATE

**ELECTRICAL:**  
IMPEDANCE: 50 OHM

**PACKAGING:**  
COMPONENT SHALL BE INDIVIDUALLY PACKAGED IN  
ACCORDANCE WITH L-COM SPECIFICATION PS-0031.

**APPLICATION:**  
RG213 COAXIAL CABLE.

**REGULATORY COMPLIANCE:**  
CE2011/65/EU(RoHS DIRECTIVE)

UNLESS OTHERWISE SPECIFIED, DIMENSIONS ARE IN INCHES [mm]  OVERALL CABLE LENGTH TOLERANCE: ≤12 [305] = +1 [25] / -0 >12 [305] ≤60 [1524] = +2 [51] / -0 >60 [1524] ≤120 [3048] = +4 [102] / -0 >120 [3048] ≤300 [7620] = +6 [152] / -0 >300 [7620] = +5% / -0%  ALL OTHER DIMENSIONAL TOLERANCES: .X = ±.2 [5.08] .XX = ±.02 [51] .XXX = ±.005 [13]	APPROVALS	DATE	 45 BEECHWOOD DRIVE NORTH ANDOVER, MA 01845		CATEGORY	COAXIAL	PRODUCT DESCRIPTION	TYPE "N" CRIMP PLUG
	DRAWN BY C.MCCORMICK	01/23/2004						
	CHECKED BY D.PARHAM	01/23/2004						
	APPROVED BY R.CARRICK	01/23/2004						
CONFIGURATION DETAILS OF UNDIMENSIONED FEATURES MAY VARY		COLOR VARIATIONS MAY OCCUR		SIZE <b>A</b>		FSCM NO. <b>43321</b>		DWG. NO. <b>BAC506</b>
IAB04-019		SCALE: NONE		CAD FILE: BAC506.SLDDRW		SHEET 1 OF 1		