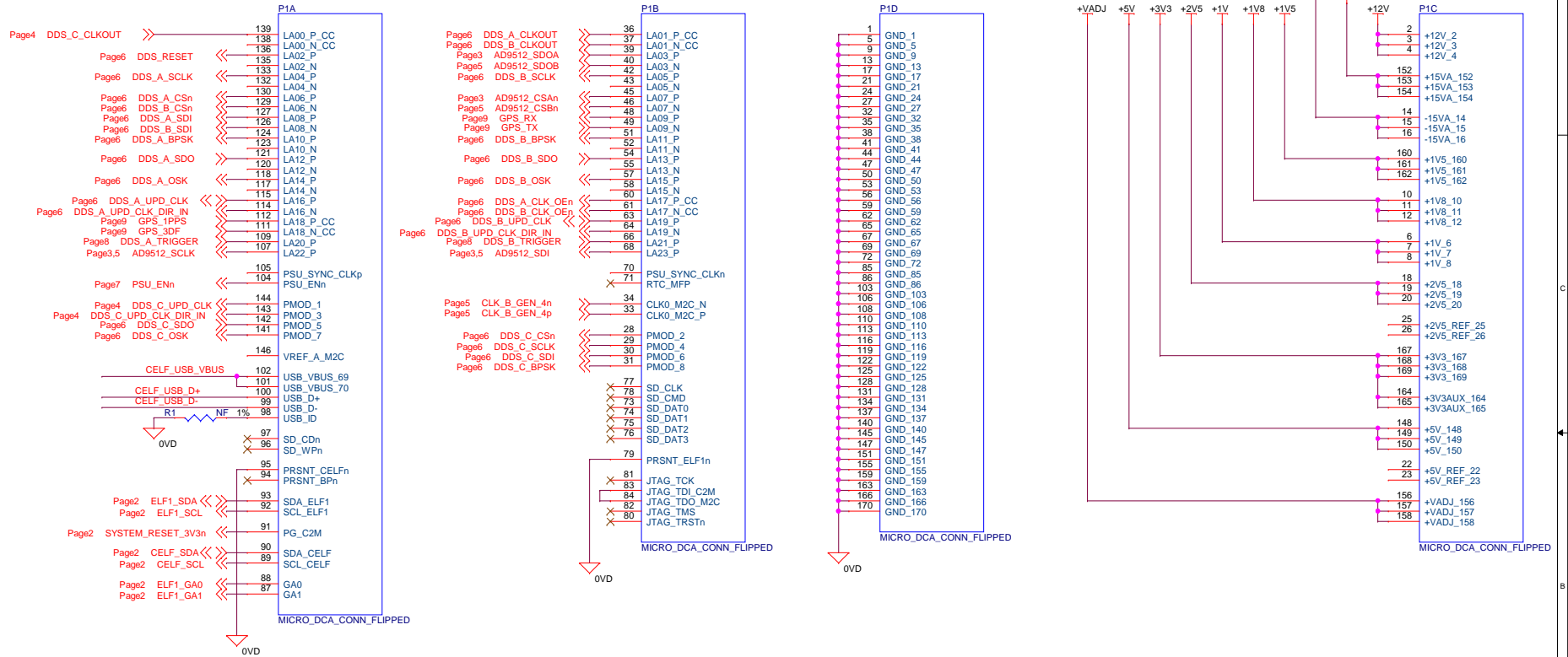



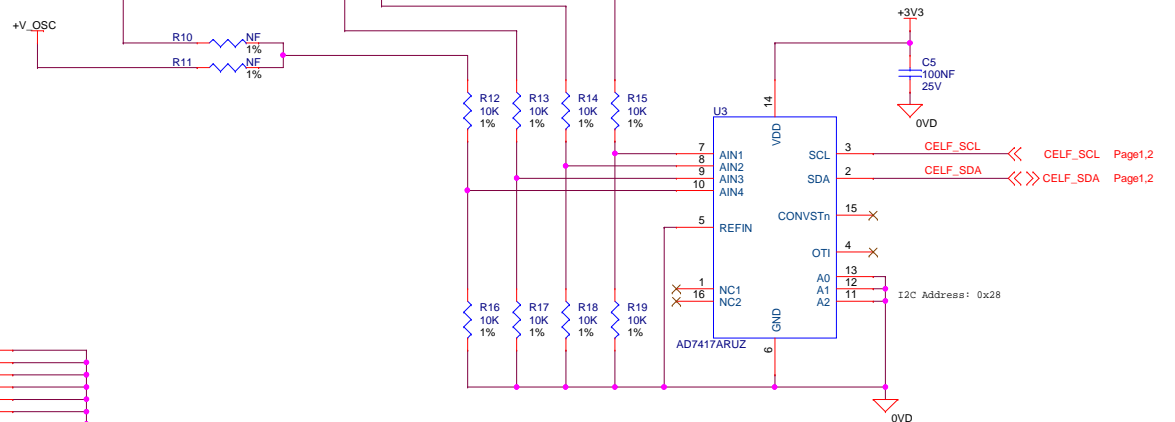
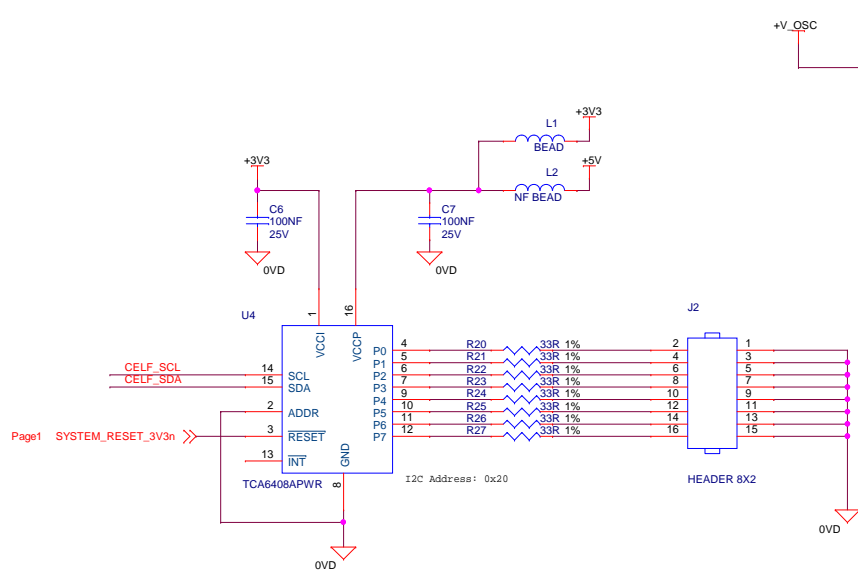
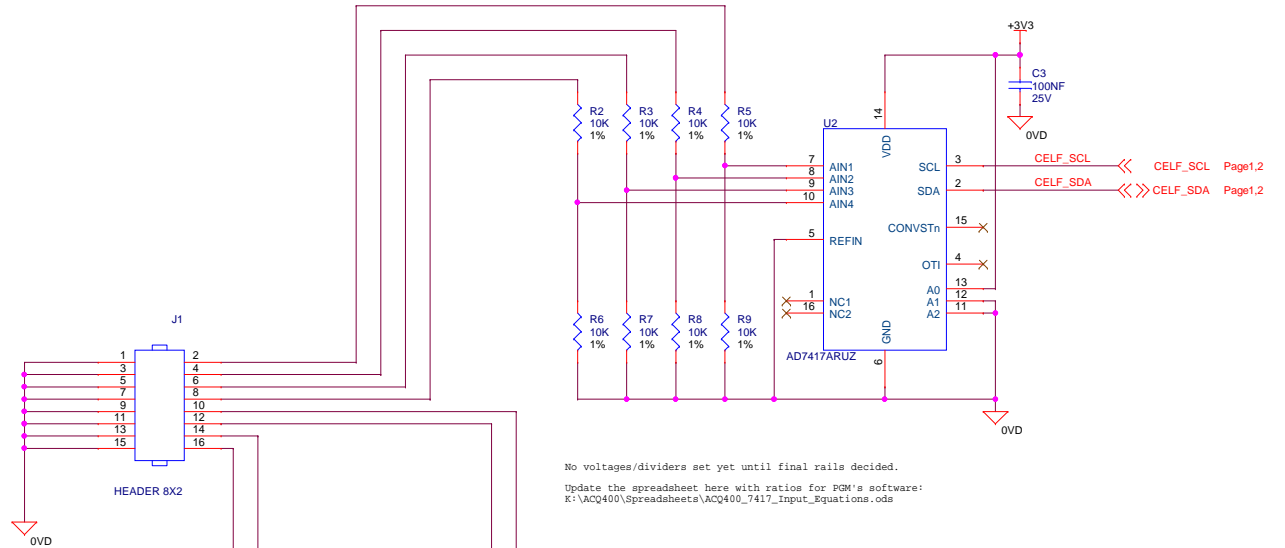
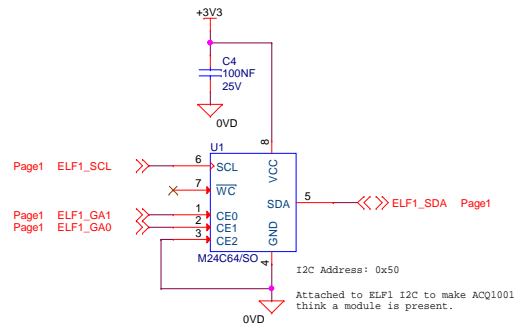
JTAG, I2C at +3V3.
All ELF1_IaXX pins are at +VADJ.
Likewise with PMOD and SD pins. Any level shifting should be on CELF.




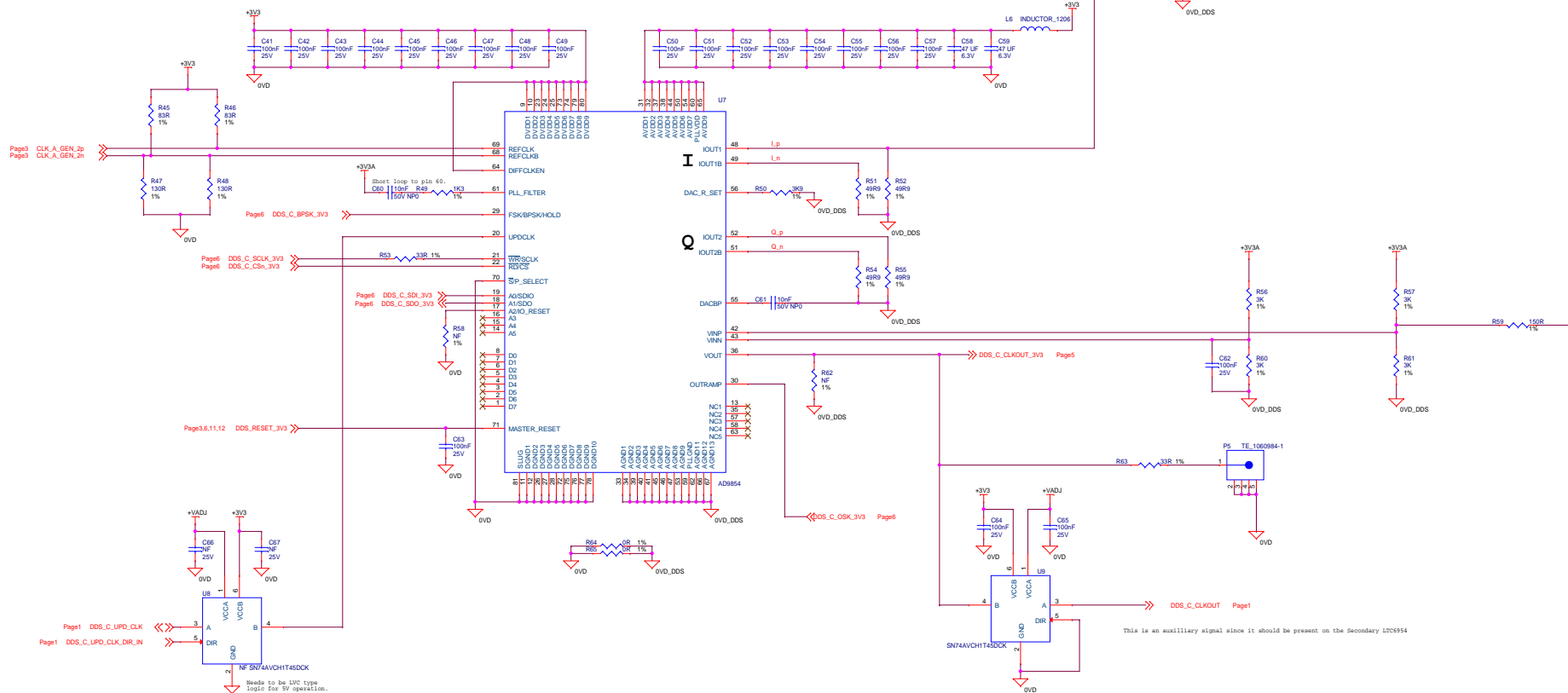
Notes

3V3 rail is over 3A with 3rd DDS need additional capacity on ACQ1001 or reduced power modes on the DDS devices


TITLE RAD-CELF Extension		DESCRIPTION CELF Connector	
DESIGN ENG:John McLean		PART NO 3050-5008-001	
<p>Any specifications, drawings or reprints or data furnished to bidder or seller shall remain D-TACQ Solutions property, shall be kept confidential, shall be used for the purposes of complying with D-TACQ Solution's requests for quotation or with D-TACQ Solutions purchase orders and shall be returned at D-TACQ Solutions request. Patent rights embodied in designs, tools, patterns, drawings, devices, information and equipment supplied by D-TACQ Solutions pursuant to this request for quotation or purchase order and exclusive rights for use in reproduction thereof are reserved by D-TACQ Solutions Ltd</p>		REV	6
		DATE	Friday, June 03, 2016
		SHT 1 OF 12	 James Watt Building Scottish Enterprise Tech Park East Kilbride Scotland UK G75 0QD

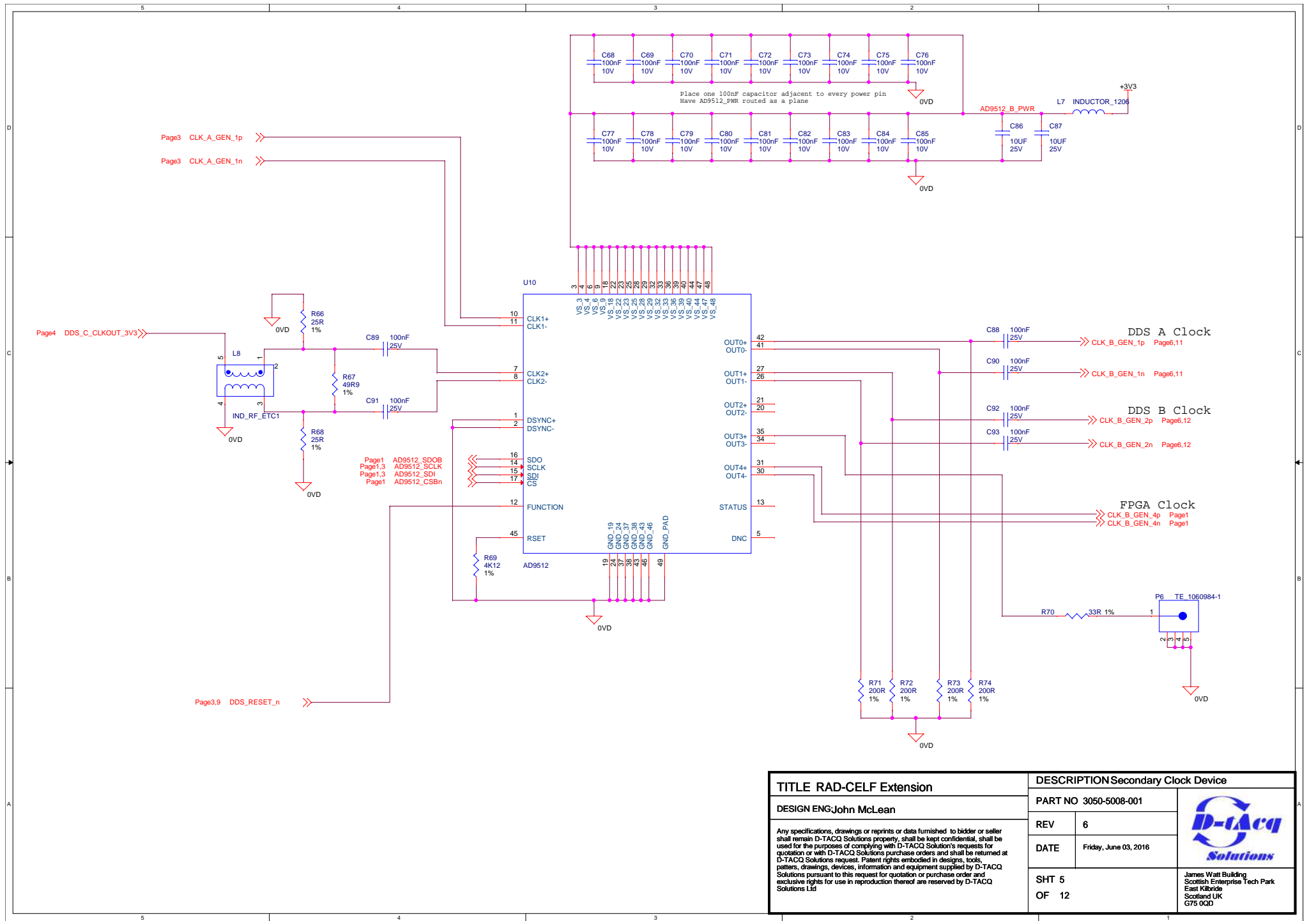



TITLE RAD-CELLF Extension		DESCRIPTION I2C	
DESIGN ENG: John McLean		PART NO 3050-5008-001	
Any specifications, drawings or reprints or data furnished to bidder or seller shall remain D-TACQ Solutions property, shall be kept confidential, shall be used for the purposes of complying with D-TACQ Solution's requests for quotation or with D-TACQ Solutions purchase orders and shall be returned at D-TACQ Solutions request. Patent rights embodied in designs, tools, patterns, drawings, devices, information and equipment supplied by D-TACQ Solutions pursuant to this request for quotation or purchase order and exclusive rights for use in reproduction thereof are reserved by D-TACQ Solutions Ltd		REV	6
		DATE	Friday, June 03, 2016
SHT 2 OF 12		 James Watt Building Scottish Enterprise Tech Park East Kilbride Scotland UK G75 0QD	

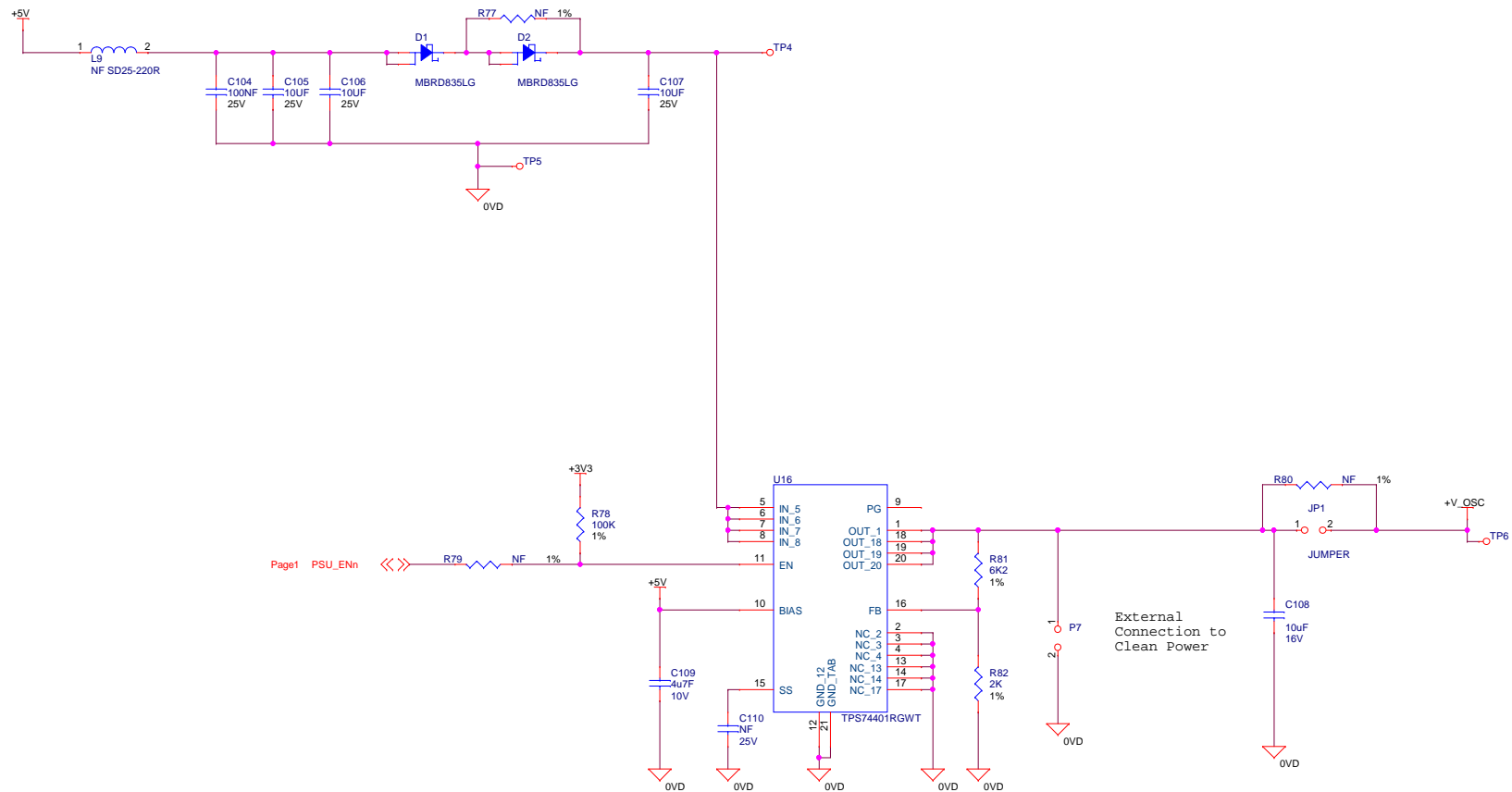


This is an auxiliary signal since it should be present on the Secondary LTC954

TITLE RAD-CEL Extension		DESCRIPTION Clock Remap DDS	
DESIGN ENG: John McLean		PART NO	3050-5008-001
Any specifications, drawings or reports or data furnished to bidder or seller shall remain D-TACO Solutions property, shall be kept confidential, shall be used for the purposes of complying with D-TACO Solutions requests for quotation or with D-TACO Solutions purchase orders and shall be returned at D-TACO Solutions request. Patent rights embodied in designs, tools, letters, drawings, documents, information and equipment supplied by D-TACO Solutions pursuant to this request for quotation or purchase order and exclusive rights for use in reproduction thereof are reserved by D-TACO Solutions Ltd		REV	6
		DATE	Friday, June 03, 2016
SHT 4		 James Watt Building Scottish Enterprise Tech Park East Kilbride Scotland G75 9DD	
OF 12			



TITLE RAD-CELF Extension		DESCRIPTIONSecondary Clock Device	
DESIGN ENG:John McLean		PART NO 3050-5008-001	
		REV 6	
		DATE Friday, June 03, 2016	
Any specifications, drawings or reprints or data furnished to bidder or seller shall remain D-TACQ Solutions property, shall be kept confidential, shall be used for the purposes of complying with D-TACQ Solution's requests for quotation or with D-TACQ Solutions purchase orders and shall be returned at D-TACQ Solutions request. Patent rights embodied in designs, tools, patterns, drawings, devices, information and equipment supplied by D-TACQ Solutions pursuant to this request for quotation or purchase order and exclusive rights for use in reproduction thereof are reserved by D-TACQ Solutions Ltd		SHT 5 OF 12	James Watt Building Scottish Enterprise Tech Park East Kilbride Scotland UK G75 0QD

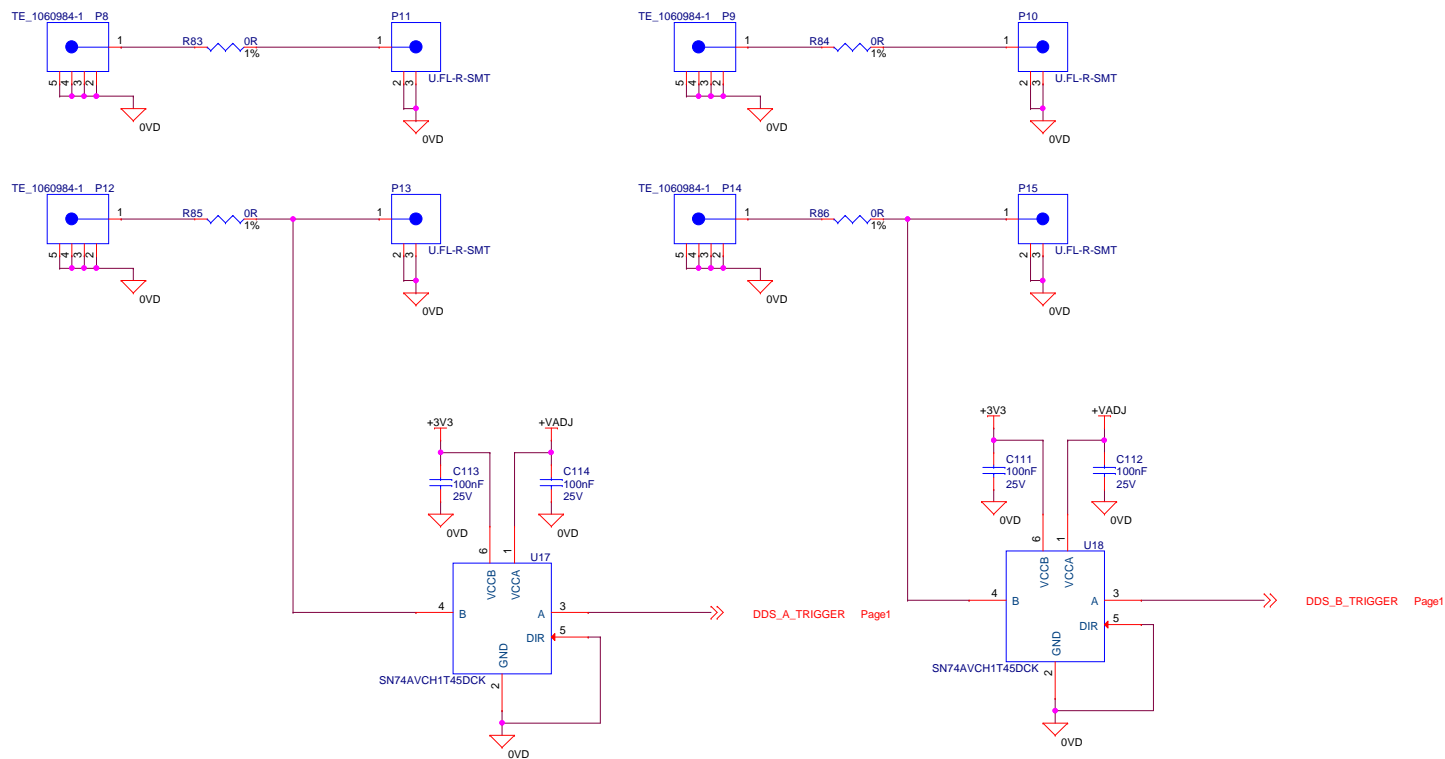



- Notes
- - 3A Max output
 - MDR Diode Drop for reduced Power Consumption
 - Bias because it needs a 1.62V headroom.
 - Pullup for Enable lines because these parts don't have internal ones.

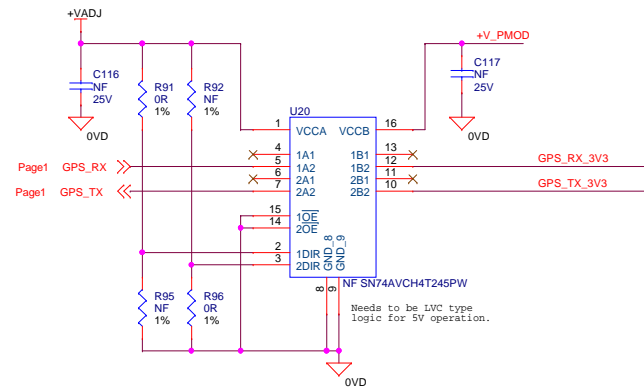
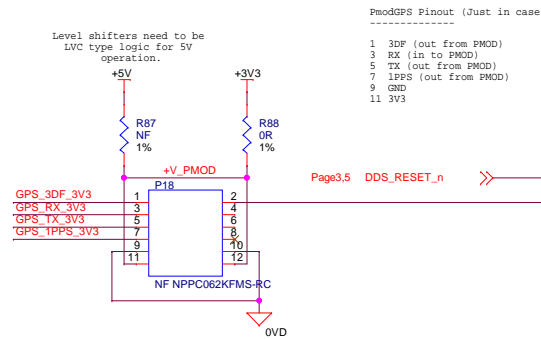
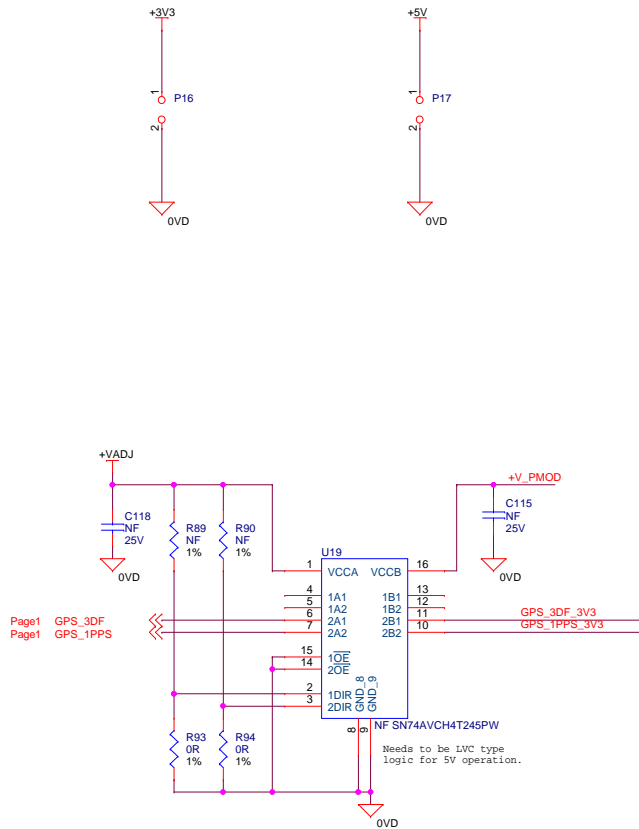
TITLE RAD-CELF Extension		DESCRIPTION Oscillator Power	
DESIGN ENG:John McLean		PART NO 3050-5008-001	
		REV	6
		DATE	Friday, June 03, 2016
		SHT 7 OF 12	James Watt Building Scottish Enterprise Tech Park East Kilbride Scotland UK G75 0QD



Any specifications, drawings or reprints or data furnished to bidder or seller shall remain D-TACQ Solutions property, shall be kept confidential, shall be used for the purposes of complying with D-TACQ Solution's requests for quotation or with D-TACQ Solutions purchase orders and shall be returned at D-TACQ Solutions request. Patent rights embodied in designs, tools, patterns, drawings, devices, information and equipment supplied by D-TACQ Solutions pursuant to this request for quotation or purchase order and exclusive rights for use in reproduction thereof are reserved by D-TACQ Solutions Ltd



TITLE RAD-CELF Extension		DESCRIPTION Misc Trigger	
DESIGN ENG John McLean		PART NO 3050-5008-001	
Any specifications, drawings or reprints or data furnished to bidder or seller shall remain D-TACQ Solutions property, shall be kept confidential, shall be used for the purposes of complying with D-TACQ Solution's requests for quotation or with D-TACQ Solutions purchase orders and shall be returned at D-TACQ Solutions request. Patent rights embodied in designs, tools, patterns, drawings, devices, information and equipment supplied by D-TACQ Solutions pursuant to this request for quotation or purchase order and exclusive rights for use in reproduction thereof are reserved by D-TACQ Solutions Ltd		REV	6
		DATE	Friday, June 03, 2016
SHT 8 OF 12		 James Watt Building Scottish Enterprise Tech Park East Kilbride Scotland UK G75 0QD	



PMOD GPS Pinout (Just in case)

1 3DF (out from PMOD)


3 RX (in to PMOD)

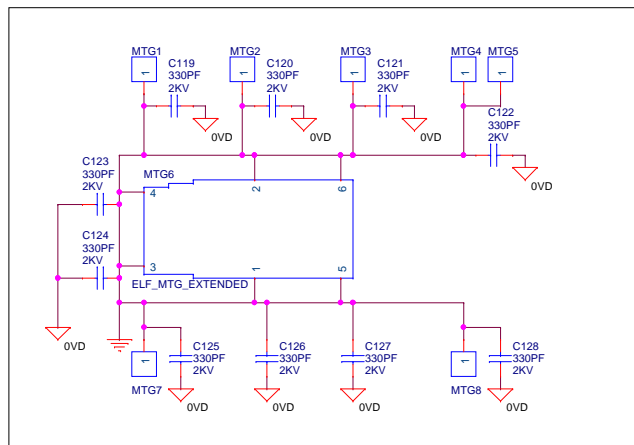
5 TX (out from PMOD)


7 1PPS (out from PMOD)

9 GND

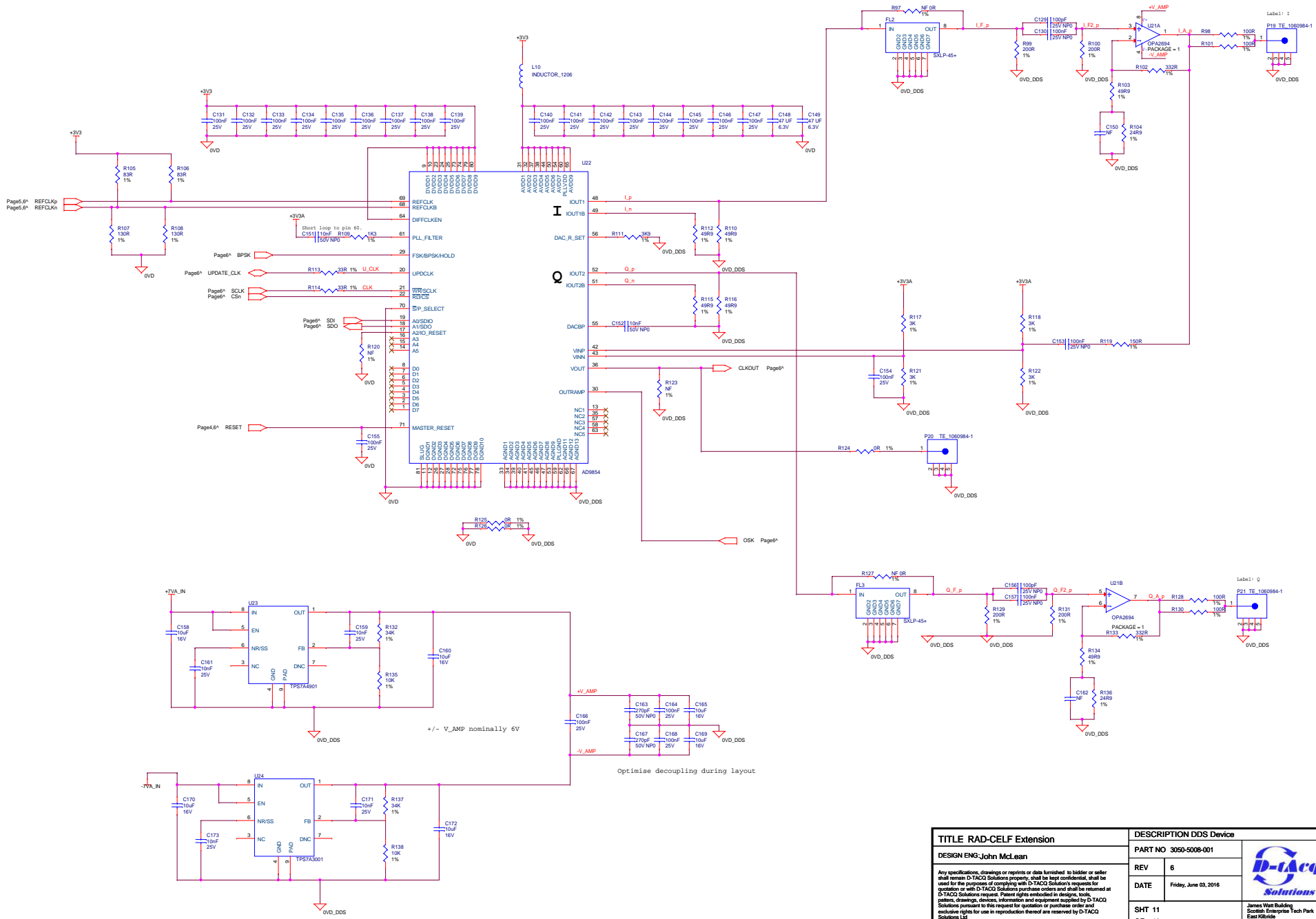
11 3V3


TITLE RAD-CELF Extension		DESCRIPTION PMOD	
DESIGN ENG:John McLean		PART NO 3050-5008-001	
<p>Any specifications, drawings or reprints or data furnished to bidder or seller shall remain D-TACQ Solutions property, shall be kept confidential, shall be used for the purposes of complying with D-TACQ Solution's requests for quotation or with D-TACQ Solutions purchase orders and shall be returned at D-TACQ Solutions request. Patent rights embodied in designs, tools, patterns, drawings, devices, information and equipment supplied by D-TACQ Solutions pursuant to this request for quotation or purchase order and exclusive rights for use in reproduction thereof are reserved by D-TACQ Solutions Ltd</p>		REV	6
		DATE	Friday, June 03, 2016
		SHT 9	 James Watt Building Scottish Enterprise Tech Park East Kilbride Scotland UK G75 0QD
		OF 12	

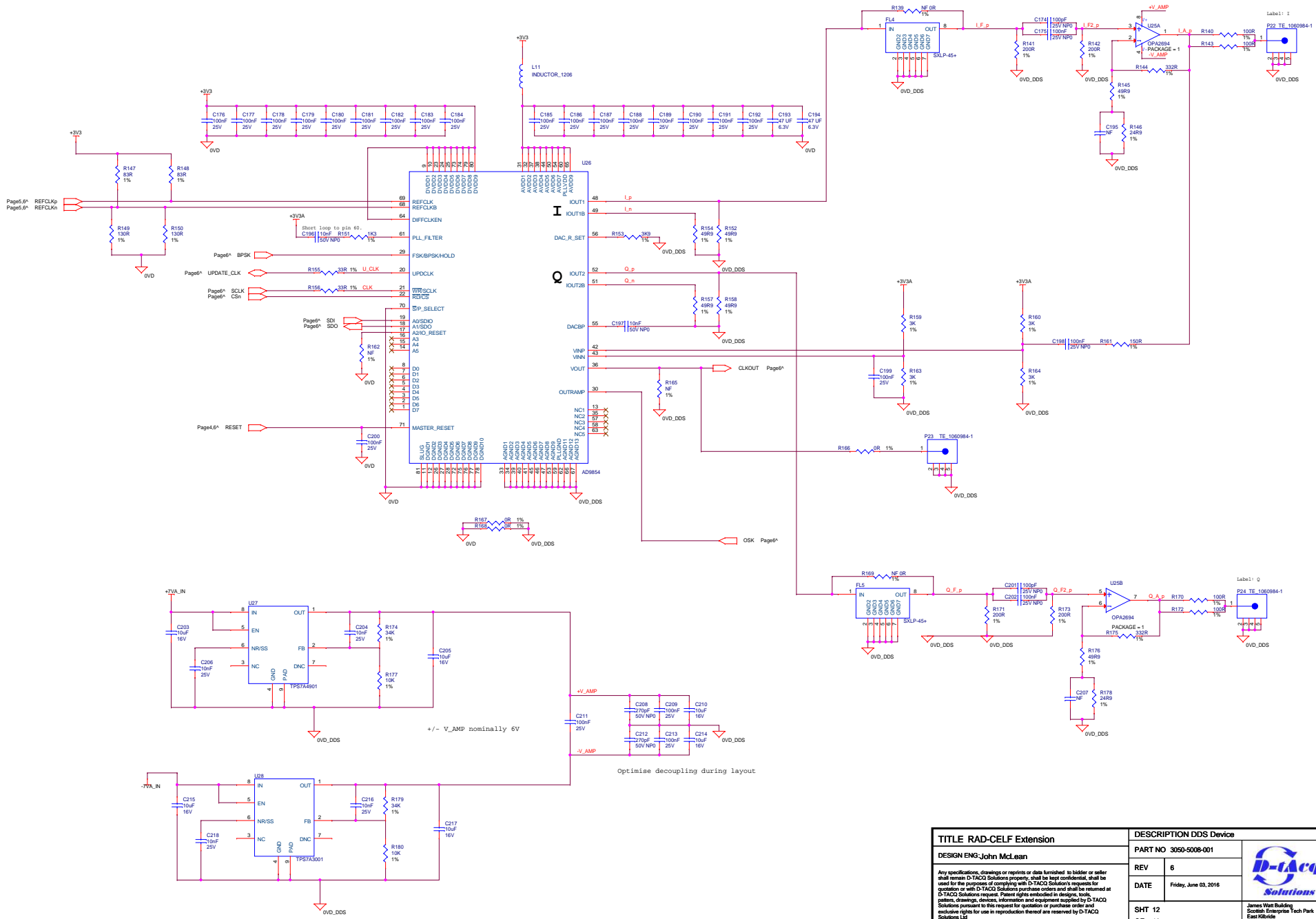



TITLE ACQ1002 Appliance Extension		DESCRIPTION Mechanical	
DESIGN ENG Peter Johnston		PART NO 3050-5004-001	
REV	6		
DATE	Friday, June 03, 2016		
SHT 10	OF 12	James Watt Building Scottish Enterprise Tech Park East Kilbride Scotland UK G75 0QD	

Any specifications, drawings or reprints or data furnished to bidder or seller shall remain D-TACQ Solutions property, shall be kept confidential, shall be used for the purposes of complying with D-TACQ Solution's requests for quotation or with D-TACQ Solutions purchase orders and shall be returned at D-TACQ Solutions request. Patent rights embodied in designs, tools, patterns, drawings, devices, information and equipment supplied by D-TACQ Solutions pursuant to this request for quotation or purchase order and exclusive rights for use in reproduction thereof are reserved by D-TACQ Solutions Ltd



TITLE RAD-CEL Extension		DESCRIPTION DDS Device	
DESIGN ENG: John McLean		PART NO	3050-5008-001
Any specifications, drawings or reports or data furnished to bidder or seller shall remain D-TACO Solutions property, shall be kept confidential, shall be used for the purposes of complying with D-TACO Solutions requests for quotation or with D-TACO Solutions purchase orders and shall be returned at D-TACO Solutions request. Patent rights embodied in designs, tools, software, drawings, documents, information and equipment supplied by D-TACO Solutions pursuant to this request for quotation or purchase order and exclusive rights for use in reproduction thereof are reserved by D-TACO Solutions Ltd		REV	6
		DATE	Friday, June 03, 2016
		SHT 11	 James Watt Building Scottish Enterprise Tech Park East Kilbride Scotland G75 9DD
		OF 12	



TITLE RAD-CEL Extension		DESCRIPTION DDS Device	
DESIGN ENG: John McLean		PART NO	3050-5008-001
Any specifications, drawings or reports or data furnished to bidder or seller shall remain D-TACO Solutions property, shall be kept confidential, shall be used for the purposes of complying with D-TACO Solutions requests for quotation or with D-TACO Solutions purchase orders and shall be returned at D-TACO Solutions request. Patent rights embodied in designs, tools, letters, drawings, documents, information and equipment supplied by D-TACO Solutions pursuant to this request for quotation or purchase order and exclusive rights for use in reproduction thereof are reserved by D-TACO Solutions Ltd		REV	6
		DATE	Friday, June 03, 2016
		SHT OF	12 12
		 James Watt Building Scottish Enterprise Tech Park East Kilbride Scotland G75 9DD	